

# Your Parkinson's disease care team

Support is available at every stage of your VYALEV treatment journey



## Prescribing specialist\*

- Your prescribing doctor
- Main point of contact for any questions regarding Parkinson's disease (PD) symptoms, disease progression and treatment decisions
- Responsible for your overall care and management of your condition

\*This could be a neurologist, movement disorder specialist or geriatrician

## Parkinson's clinic nurse\*

- Works alongside your prescribing specialist to manage your PD symptoms and treatment plan
- Provides medical advice to support your overall wellbeing

\*Not all clinics have a PD nurse

## AbbVie Care nurse consultants

- A team of nurses accessible through AbbVie Care to complement the care of your prescribing specialist
- Help you get started on your treatment and available to support you with any questions related to AbbVie medication and delivery system\*

\*No medical advice.

## Allied health professionals

- Include a pharmacist, physiotherapist, occupational therapist, speech therapist, dietitian, social worker and psychologist
- Help you manage your PD-related symptoms and other aspects of living with PD

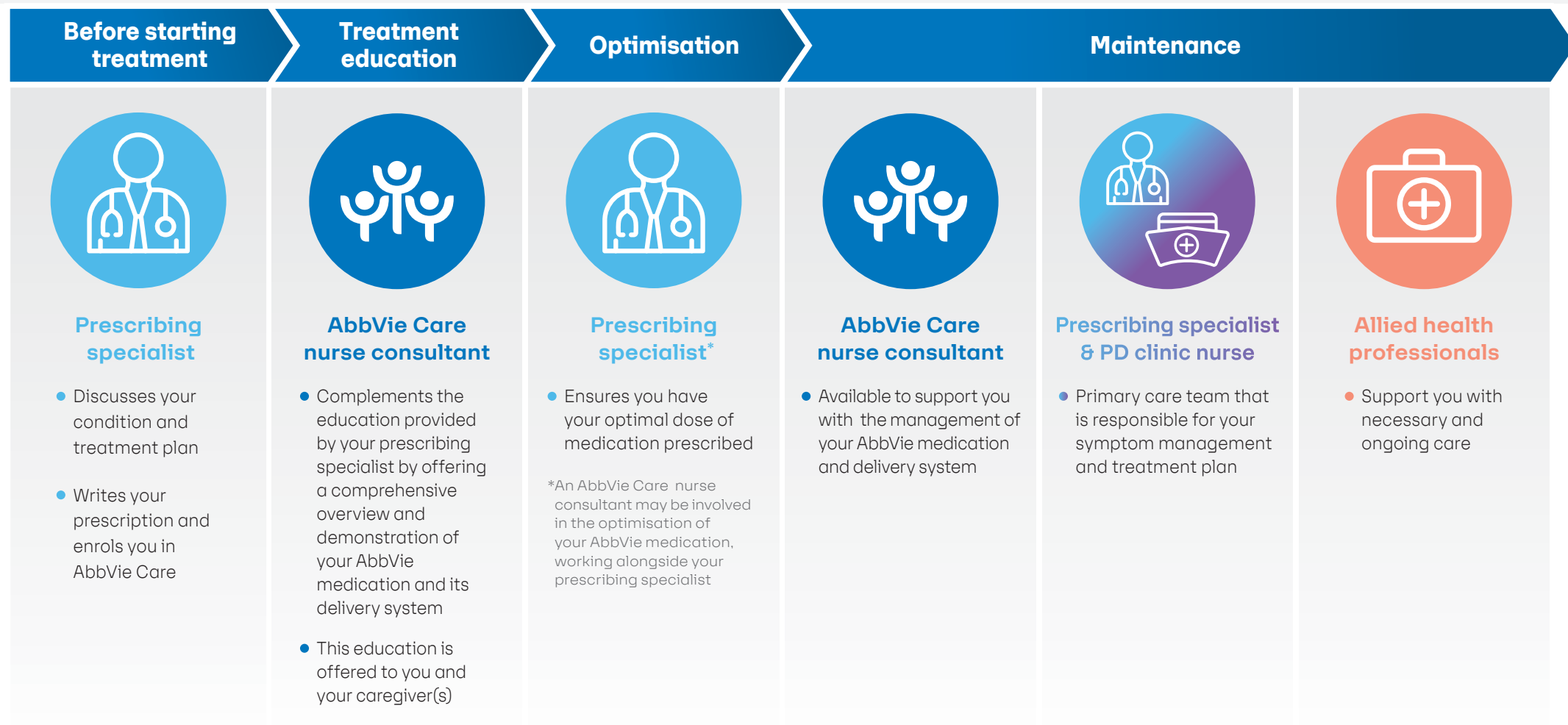
## Your caregiver(s)

- Include your significant other, family members, friends and carers
- Help and support you with your day-to-day routine



# Your treatment process

Touchpoints throughout your VYALEV treatment journey



**Speak to your prescribing specialist if you have any questions about your condition and/or your treatment.**  
For additional resources to support you on your VYALEV treatment journey, call AbbVie Care on **1800 230 608**.



AbbVie is committed to environmental sustainability and has chosen to print on EcoStar. EcoStar is manufactured with 100% recycled post-consumer waste and is made carbon neutral. EcoStar is both FSC® and ISO 14001 Certified. This has been printed by a Forest Stewardship Council® (FSC®) chain of custody certified printer.